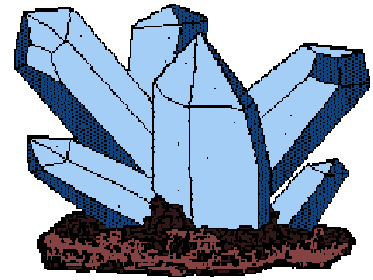

OPLL's GEMS

A RESEARCH AIDE FROM
OMER POOS LAW LIBRARY

August, 2004



Welcome to SLU Law School, and for those of you returning, we are glad to see everyone again. The Law Library staff is here to meet your research needs.

We are expanding our newsletter this year to keep you apprised of library developments along with articles highlighting trends in legal research.

Please feel free to suggest ideas for future issues of OPLL's Gems.

Thanks.

Liz Glankler,
Access Services Librarian and
Editor, OPLL's Gems

Introducing Mark Bernstein, the new Law Library director.

Mark Bernstein joined SLU July 1 as the Director of the Law Library and Assistant Professor. In addition to directing the library Mark will be teaching Advanced Legal Research beginning next semester. Mark grew up in Pittsburgh and graduated with a B.A. in Political Science from the University of Pittsburgh. His JD is from Tulane and he also holds a Masters in Library Science from Pittsburgh.



Mark began his career in law librarianship at Columbia University in New York where he was a reference librarian and eventually promoted to Head of Reference. Prior to coming to SLU he was the Deputy Director at the Duke University Law Library.

Mark's office is in Room 170 of the Law Library. Please feel free to drop by with any questions, suggestions or concerns you may have about the library or library services.



Check out our "Gems" in the Circulation and Reference areas!

New, custom-built desks were installed in August. A unified look along with freshly painted walls has aesthetically improved the entrance to the library.

A rearranged browsing area creates a more welcoming environment. The rotating handout stand is an added feature. The round table and magazine rack were refinished to match the Circulation and Reference Areas.

Food and drink are allowed in the library. We ask that you clean up after yourself by disposing of items in a nearby waste receptacle. Join the Law Library staff in taking pride in the new improvements. Let's keep the library clean, and protect our new improvements as well as older, irreplaceable resources.



Improved Access To CD-Rom Data Sources

By David Kullman

The library recently made hundreds of thousands of pages of text, statistics and images stored in CD-ROM format more accessible to the faculty and students. Using a newly installed computer workstation located behind the Circulation Department offices (near the back stairwell and beside the microfiche reader), patrons can search, browse, email, copy or print data on subjects ranging from transcripts of the Nuremberg Trials to full color French posters from World War I. More prosaic data resources include statistics from the Federal Justice Statistics Program, the Journal of the United States House of Representatives, and the Internal Revenue Services' Manual. A complete table of contents web page with many direct links to the data is available on the CD-ROM Workstation to facilitate the ease with which users can navigate the data the library has collected in this format.

Improved access to all of these documents and images could not have been achieved without the help of the Law School's ITS staff. Each CD-ROM selected for inclusion on the workstation presented different technological challenges. Some of the CD-ROMS required installation of specific proprietary software to run properly. Other, older CD-ROMS were initially incompatible current computer operating systems due simply to technological obsolescence. And, as the cycle from introduction to obsolescence continues to shrink the challenge of making data available will grow proportionately.

Nevertheless, with the exception of only a handful of titles, all one needs to do to access the information contained in the CD-ROM Workstation is sitting down at the CD-ROM Workstation, logging in,

waiting for the CD-ROM Table of Contents web page to automatically load and then clicking on a link which will take them directly to the data they are searching for.

A few of the CD-ROMS require that the physical disk be used. Which ones fall into this category will be noted in MERLIN. If the actual CD-ROM must be used the online catalog will list its location in the library as the Audio-Visual Room. If you have any problems locating the proper CD-ROM ask any reference librarian and they can assist you in locating it. If the CD-ROM has already been loaded onto the workstation the catalog will list its location as the "CD-ROM Workstation".

The value of making these resources more readily accessible becomes apparent when one considers that many documents today, particularly government documents, may never be published in paper format. While digital documents are still in the minority, building the infrastructure to access the data captured and published on CD-ROM's has become and will continue to be an important part of the mission of this library. Without the technical ability to retrieve it digital data is lost as surely as if it were written in a foreign language that no one can translate. As data becomes available on other formats such as DVD's, the library will continue working to ensure access to them as well.

Almost without exception all the CD-ROMS in the library's collection have been cataloged and made a part of our MERLIN catalog. If relevant information is on a particular CD-ROM faculty and students will find it in exactly the same way they would any book or journal collected by the library in paper format. The only difference will be its physical location. Instead of residing on a shelf in the library a CD-ROM title found in the

catalog will either be on the CD-ROM Workstation or in the audio-visual room.

For purposes of conserving space on the CD-ROM workstation's drives, not all CD-ROM's collected by the library have been installed. These titles are, however, still accessible. Ask a Reference Librarian to assist you if you can't find the CD-ROM you're interested in.

Many of the materials collected by the library in CD-ROM format are unavailable (at least in this library) in any other format. It is precisely for this reason that making them easily accessible is an important goal of the library staff and ITS. And, as digital data migrates to other electronic formats such as DVDs we will work to make that information available to our patrons as well.

News You Can Use

By Kathleen Casey



How do you keep up with current trends in law? The Law Library subscribes to 20 current awareness newsletters and services by the Bureau of National Affairs (BNA). These services offer immediate and extensive coverage of practice areas like health law, labor and employment, criminal, family, intellectual property, environmental, securities, electronic commerce and international trade.

The web version of most BNA services provides a weekly 'Highlights' section that covers upcoming laws and regulations, current cases and tracks significant developments. Each news item has a summary paragraph and a link to the full article.

Although BNA services are available for

research on LEXIS and WESTLAW, the 'Highlights' are best accessed through the web version. The web version is available only within the law school from the library's homepage. Select 'Databases' and then pick 'BNA' and choose a service.



The Many Facets of : Missouri Legal Research

By Peggy McDermott

If you have been involved in locating the various publications that comprise a legislative history for a federal statute, you may expect the same type of publications to be available for a Missouri statute. Unfortunately the reports, hearings, and debates that were so helpful at the federal level do not exist for Missouri or for most states. However, once you have located the bill number it might be helpful to compare the text of the original bill as it was introduced with the text of the other versions generated along the way. The library has the various versions of House and Senate bills from 1953 to 2002 in paper. Summaries and texts of bills are also available on Missouri's official website (<http://www.moga.state.mo.us/>) back to 1995. Lexis and Westlaw have Missouri Legislative Services back to 1988.

The Law Library also has a historical collection of Missouri statutes dating back to the period prior to statehood. If you become involved in tracing a Missouri statute back to its beginning you will want to head for the second floor of the library around KFM 7830. Annotated Missouri statutes are also available on microfiche from 1951 to the present.

It is possible that articles have been written about the statute. Citations to law review articles might be located in Vernon's Annotated Missouri Statutes and on LegalTrac. The web version of LegalTrac is available from the Law Library's homepage (<http://law.slu.edu/library>). First select 'Databases' and then 'Law Journal / Indexes.' It is also available on both Lexis and Westlaw under the pseudonym Legal Resource Index. If you have any questions concerning Missouri legal research please stop by the Reference Desk or call 977-1447.

when they sign on with their work passwords.

LexisNexis has improved the focus feature and moved the location of the focus bar/function. The focus bar is now at the top of your page allowing you to focus from the same page. In addition to moving it, Lexis has also made it possible to focus within a focus. Thus you can keep narrowing your results. You can track your searches and their results by using the history feature.

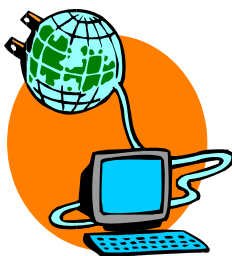
Westlaw has enhanced their StatutesPlus by adding the ability to link to older versions of statutes in CA, NY and USCA. Additional states will be added throughout 2004-2005.

Westlaw is now beginning to add legislative histories for states to its databases. Currently 12 states are included.

Throughout the school year more changes will occur to both online services, both in content and appearance.

New Features on Lexis and Westlaw

By Lynn Hartke



LexisNexis and Westlaw have added new databases and search capabilities to each of their online services. Both services continue to improve and expand their resources.

Coming soon a new Lexis search page. The new student search screen will be cleaner and similar in appearance to the Westlaw Law School Classic page. This was done in response to students' requests. This screen is only available for law schools. Those working in a law firm or court will see the old/ normal page

Saint Louis University School of Law
3700 Lindell Blvd.
St. Louis, MO 63108
Phone: 314-977-3081
Fax: 314-977-3966

NEED HELP! DIAL 977-1447

When you walk into the Law Library and look straight ahead you will see the Reference Desk. This desk is staffed by Reference Librarians who are there to help you locate the information and materials you need. Please stop by and get to know us. We want to get to know you and help you learn to use the library.

Reference Hours

Monday- Thursday	9 a.m.- 9 p.m.
Friday	9 a.m.- 5 p.m.
Saturday	11 a.m.- 5 p.m.
Sunday	Noon - 6 p.m.